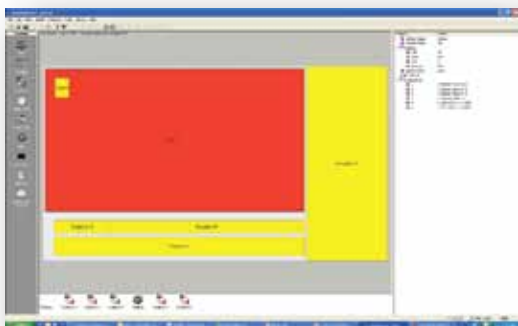


# Enseo Author™

Digital Signage Software  
for use with Enseo's Cassini HDD/SSM

**Author** is an intuitive digital signage application for use with Enseo Cassini media players. Author enables a true multi-media experience that is reliable and user friendly. Author allows you to use the media you are comfortable with (and already have) to build a customized digital signage experience. You can combine broadcast video, live television video, IP streamed video, stored video content, web site content, graphics, text and more to have the ultimate digital signage creation experience.



**Author** can use any or all of the following elements on screen to create a "Theme" that is a unique look for your digital sign.

#### **Video (and Audio)**

Up to 2 HD video zones (with or without audio) can be on screen with a simple mouse click. This video can come from an IP streaming server, broadcast TV tuned with the onboard tuner (HD or SD), or stored on the local drive.

#### **Graphic Overlays**

Use your favorite graphics creation tool and import single or sequences of BMP, JPG, PNG and GIF graphic files. 256 layers of transparency are supported on each graphic.

#### **Text Elements**

Static, scrolling or crawling text from internal or external (URL) sources. This enables the most computer-challenged employee to update a simple daily message.

#### **Web Elements**

Localize your message without the hassle of content distribution by selecting sections of live or stored web pages.

#### **Date & Time**

Easily add date/time in a variety of formats

#### **Playlists**

Create a series of themes that change manually or automatically

## Content Distribution

Choose the method of distribution that works best for you: Sneaker net with a USB drive or IP delivery using the network.

## SPECIFICATIONS

### Hardware

- Enseo Cassini SSM and Cassini HDD

### Video Formats

- MPEG-2, MPEG-4 and H.264

### Video Distribution

- IP Multicast and Unicast (RTP, RTSP, UDP)
- RF distribution including digital or analog (NTSC, ATSC, QAM)

### Graphics Formats

- BMP, GIF (Static and Animated), PNG and JPG

### Minimum Recommended PC Requirements

*(for Author only, Cassini is an embedded appliance, not a PC)*

- Windows XP or later, 2 GHz CPU, 1GB RAM, disk space content dependent, FTP server or USB thumb drive

## OPTIONS

Wireless Control Integration with Lutron, Crestron and others

## KEY FEATURES

### User Friendly GUI

Easy to use interface for creating dynamic digital signage

### Broadcast and IP Video

Interrupt your special message by changing channels in the video window to watch and listen to important current news or entertainment events .

Cassini themes can be configured as live or as “store and forward devices” to optimize your network bandwidth used for content updates and increase ultimate reliability.

Each theme can be saved to a channel to create a virtual channel map that is easy to navigate with the TV remote control.

Change themes without changing channels.

Change channels without changing themes.