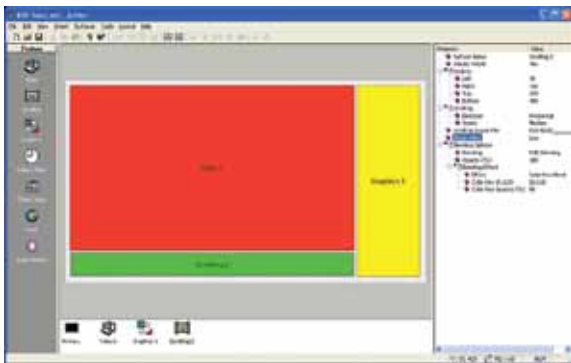




# Enseo Cassini™ HDD/SSM

## Digital Signage Player

**Cassini** is a reliable and flexible HD appliance for all your digital signage needs. Cassini is an IP streaming device, an RF tuner, a multi-zone graphics overlay appliance, and a store and forward device all in one. Cassini makes it easier than ever to have dynamic content on any screen, and in the format and resolution of your choice. Cassini is available in three models, configured with either Solid State Memory (SSM) or Hard Disk Drives (HDD).



### Digital Signage Creation with Author™ Software

Enseo's Author Software is a user friendly screen/theme creation package for digital signage. Author allows users to create themes with scaled video, graphics, text and web elements, upload the theme and content to a USB thumb drive or FTP site and easily download via sneaker net or network into the Cassini of your choice. By using this flexible content distribution architecture, network bandwidth usage can be optimized for low traffic times.

### IPTV Streaming

Cassini provides full support for industry standard IPTV streaming protocols. Please contact your Enseo representative for a list of current supported servers.

### RF Tuner

The built in Triband tuner decodes broadcast television signals over satellite or cable. Cassini is the ideal solution for combined live and scheduled/stored signage solutions.

### Easy Content Management

Upload themes, content and playlists with simple USB thumb drives. Networked players can download over the internet or from an FTP site.

### Display Control

Cassini includes built in display control support through RS232. The constantly growing library of drivers supports the majority of professional displays from major manufacturers.

### SafePlay™

Enseo's proprietary SafePlay™ technology is the ultimate antidote to the blank screen, a major concern in streaming architectures. SafePlay™ provides a backup local source in the event of IP or RF signal loss or hard disk failure. The default Theme or playlist will automatically activate and keep your message on your display at all times.

### SDK and API Support

Advanced Function and Control support available through the Cassini Software Developers Kit (SDK) and Application Programmers Interface (API). Contact your Enseo representative for more information.



# Enseo Cassini™ HDD/SSM

## Digital Signage Player

### KEY FEATURES

**Reliable 24/7 operation with an embedded Linux operating system and Opera browser.**

#### Triband RF Tuner

NTSC/QAM/ATSC tuner for flexibility of receiving CATV, Off-the-Air, or internal closed circuit TV content, full FCC Closed Captioning compliant

#### IP Streaming

Support of HD streaming media using UDP, RTP,RTSP protocols. Support up to 19.4 Mb/s streaming HD media.

#### Display Control

Integrated control configurations to support over 100 commercial displays

#### Control Options

Support of the follow device control methods:

- IP control from central control center
- IR Remote control at display
- RS232 serial control, including 3<sup>rd</sup> party touch panel support

### OPTIONS

- RS-232 to IR adapter
- Enseo IR Remote Control
- On-Site Training
- Extended Warranty

### SPECIFICATIONS

#### Media Distribution/Signals

|               |          |                            |
|---------------|----------|----------------------------|
| Digital Tuner | •••••••• | ATSC (8VSB) / QAM (64/256) |
| Analog Tuner  | •••••••• | NTSC                       |
| IP Streaming  | •••••••• | UDP, RTP, RTSP             |

#### Media Types

|              |          |                                            |
|--------------|----------|--------------------------------------------|
| Video Codecs | •••••••• | MPEG-2, MPEG-4, H.264                      |
| Audio Codec  | •••••••• | AC3, PCM, MP3, AAC, WAV, MPEG-1 (layer 2)  |
| Resolutions  | •••••••• | 480i, 480p, 573i, 573p, 720p, 1080i, 1080p |

#### Inputs

|                    |          |                                                |
|--------------------|----------|------------------------------------------------|
| Ethernet           | •••••••• | 10/100 LAN (RJ45)                              |
| F-Connector        | •••••••• | Coax cable input (CATV / 75 Ohm)               |
| Analog Video/Audio | ••••••   | Composite Video (1x RCA)/Analog Audio (2x RCA) |
| Display Control    | ••••••   | Serial RS232 (RJ11), MPI, Smart Port           |
| System Control     | ••••••   | Serial (DB9), Ethernet (RJ45)                  |
| USB 2.0            | •••••••• | Updates and content delivery                   |

#### Outputs

|               |          |                                          |
|---------------|----------|------------------------------------------|
| HDMI          | •••••••• | HDMI (HDCP)                              |
| Digital Audio | •••••••• | S/PDIF - (RCA)                           |
| Analog Audio  | •••••••• | L/R - (2 x RCA), includes volume control |

#### Storage

|             |          |                        |
|-------------|----------|------------------------|
| Cassini SSM | •••••••• | 2GB Solid State Memory |
| Cassini HDD | •••••••• | 250GB Hard Disk Drive  |

#### Physical/Environmental

|                   |          |                                              |
|-------------------|----------|----------------------------------------------|
| Dimensions        | •••••••• | 11.5" x 6.26" x 1.1"/292 x 159 x 28 mm (LWH) |
| Weight            | •••••••• | 2.3 lbs / 1 Kg                               |
| Power Consumption | ••••••   | 12.5 Watts                                   |
| Environmental     | ••••••   | RoHS compliant                               |
| Regulatory        | •••••••• | FCC Class B, CE                              |

#### Warranty

1 Year Parts and Labor with 1 Year Software license and maintenance agreement

Enseo, Inc. • 401 International Parkway • Suite 100 • Richardson • Texas • 75081  
Tel 972-234-2513 • Fax 214-570-3090 • Sales@Enseo.com • www.Enseo.com